



# Center for Communication Skills

## Newsletter

October 2009

### In This Issue

[Dyslexia Symptoms](#)

[Fast ForWord Research](#)

[Music and Autism](#)

[Learning Problems?](#)

[Dyslexia Awareness Month](#)

[Supplemental Education  
Services?](#)

[New Staff](#)

### Our Services

- **Speech/language therapy**
- **Occupational Therapy**
- **Educational Programs**

Our goal is to provide the best therapy service and support for you and your family in the Central Valley.



### Dyslexia Symptoms in Children

### Learning Problems? - We Can Help!

Now that the first round of parent conferences has started, you may be concerned about your child's progress in class. Sorting out the many reasons why a child might be struggling or not adjusting well in school is difficult. Schools have well qualified staff to help struggling learners, but there are often barriers to getting them the kind of help that may be the most appropriate.



At the California Learning Connection our Academic Enrichment Programs are based on each learner's particular learning style. We use research-proven programs that are designed for learners who do not learn easily in a classroom environment. The methods used in reading and math follow the guidelines set by the International

Dyslexia Association and the curriculum is aligned with State Grade Level Standards. We have leading technology programs such as the Fast ForWord Family of Programs. These programs help our clients accelerate their learning through exercises that also boost brain power.



Our staff is well trained in the delivery of these programs and we are continually increasing our skills and materials to reflect best practices. To have your child receive our individualized services, call 559-228-9100 for a free consultation.

### October is Dyslexia Awareness Month

In an effort to promote greater knowledge and understanding of dyslexia and related learning disabilities, the Board of Directors of the International Dyslexia Association (IDA) has officially designated the month of October as National Dyslexia Awareness Month.

According to the National Association of School Psychologists (NASP), 1 of every 3 special education students drops out of school and, tragically, a high school drop-out has a greater likelihood of going to jail than a smoker has of getting cancer. It doesn't have to

Symptoms maybe a child that:

- Has a history of trouble learning to talk
- Has difficulty following multi-step directions
- Has trouble rhyming words and/or hearing sounds in words
- Has trouble quickly recalling rote information (letters, numbers)
- Has difficulty sounding out words and/or recognizing words by sight
- Has a close relative who had difficulty learning to read



## Fast ForWord Research

For children with language impairments and poor reading skills, Fast ForWord-Language (FFW-L) may be more effective than the Attention Control computer program. Researchers found that children using the FFW-L made greater gains in blending sounds in words compared to those who used the Attention Control computer program. The study appears online in the American Journal of Speech-Language Pathology, <http://ajslp.asha.org>.

Another study found that children

be that way. Early identification and appropriate intervention are critical. If identified early, a learning disability can be treated through effective teaching methods and the majority of students with learning disabilities will have the opportunity to reach their full potential.

"When a child does not learn to read, their lives are affected forever", says IDA's President, Nancy Hennessy. "Academically, socially, economically, and emotionally, these individuals unnecessarily find themselves at risk. Teaching a child to read is a fundamental responsibility of our educational system. IDA believes strongly that effective instruction depends on the qualitative preparation of our teaching corps and on-going professional development. If we give our teachers the right tools, they will succeed and our children will also succeed." [www.dyslexia-ca.org](http://www.dyslexia-ca.org)

## Supplemental Education Services?

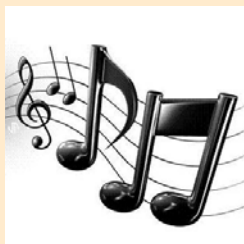
### What's That?

You may have been sent a letter by your child's school saying that your child qualifies for outside tutoring at no cost to you. The letter is about the supplemental educational services available to students in need of additional academic assistance. The Center for Communication Skills at the California Learning Connection is on the list for Fresno and surrounding school districts. We provide tutoring to each child who qualifies for this program using our outstanding powerful programs that promote academic growth.

Supplemental educational services are additional academic instructional programs designed to increase the academic achievement of students in schools that have not met State targets for increasing student achievement (adequate yearly progress) for two or more years. These services may include tutoring and after-school services. They may be offered through public- or private-sector providers that are approved by the state, such as public schools, public charter schools, local education agencies, educational service agencies and faith-based organizations. States must maintain a list of approved providers across the state organized by the school district or districts they serve, from which parents may select. States must also promote maximum participation by supplemental educational service providers to ensure that parents have as many choices as possible. <http://www.ed.gov/parents/schools/choice/choice.html>.

If you would like to know more about our Supplemental

who used FFW-L and FFWL/NBLI outperformed children who did not use the interventions on two narrative measures. This study appears online in the Journal of Speech, Language and Hearing Research <http://jslhr.ahsa.org>. ASHA Leader, Sept.22,2009



### Music and Autism

UCLA researchers are studying whether music can teach children with autism about emotions. Using a unique approach that incorporates movement, researchers are studying children with autism for 12 weeks. The goal is to evaluate the effect of the program on outcomes in social communication and emotional function and on the children's musical development. Visit [www.semel.ucla.edu/creativity/research/autism](http://www.semel.ucla.edu/creativity/research/autism).

Educational Services Program, call 559-228-9100 for a free consultation or brochure.

### New Staff

We are fortunate to have new staff members who are adding great skills and knowledge to our program. Jenny Rocca, M.S. is our new Special Programs Consultant and is running our after-school Academic Enrichment, Supplemental Services, Break the Barriers Reading Lab and Summer Enrichment programs. She is from northern California and raises horses at home in Easton while her husband, Steve teaches at Fresno State.

Nancy Barth is an experienced special education teacher who recently opened up private educational consulting business. Her vast experience in working with special education students in Fresno and southern California brings us a wealth of resources and experience in designing individualized services that are based on a child's unique needs. We are fortunate that Nancy will be consulting with us to design and provide the best programs for our clients. You can learn more about Nancy at [sites.google.com/site/bartheducationalconsultants/Home](http://sites.google.com/site/bartheducationalconsultants/Home)

Also new to our program is Jacqueline Docken, a teacher who has taught in Fresno Unified and in Salinas. She is helping out our Supplemental Service Programs by doing assessments on each child and writing the Individual Learning Plans. Jacqueline is a lot of fun and is very enthusiastic about her work with children.

---

### Quick Links

[California Learning Connection](#)

[Center for Communication Skills](#)

[Goodfellow Occupational Therapy](#)